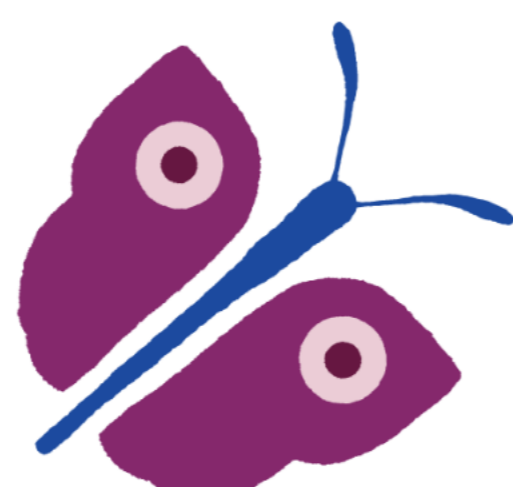


[View this email in your browser](#)

RELIVE

International registry for patients with
a relapsed or refractory hepatoblastoma
or hepatocellular carcinoma

RELIVE *flash*

No.7 - September 2023

RELIVE: the current status

The RELIVE international community continues its efforts to complete the database and to register at least 300 patients. Currently a few countries need to complete the paperwork to be ready for data entry, others have already registered all of the eligible patients.

- **The study is running in the following countries: Australia, Canada, Germany, Hong Kong, Italy, Japan, Poland, Spain, Switzerland, The Netherlands and the US.**
- **Activation is ongoing in Belgium, France, Ireland and the UK**
- **198 patients have been registered from the following sites:**

Japan (22 institutions)	49
Hong Kong Children's Hospital	37
Prinses Maxima Centrum, Netherlands	34
Hospital for Sick Children, Toronto, Canada	33
Munich (pts from several institutions) Germany	18
Gdansk, Poland	11
Istituto Nazionale Tumori, Milano, Italy	4
HU Regional Málaga, Spain	4
HU Virgen del Rocío Sevilla, Spain	2
HUG, Geneva, Switzerland	2
Universities - Kinderspital, Zurich, Switzerland	2
CHUV Lausanne, Switzerland	2

Feedback from the Steering Committee

The Steering Committee met on September 13, and took note of latest developments. Marc Ansari, international chairman of the project, as well as the team consisting of Aurore Britan, Fabienne Toutain and Rudolf Maibach informed the members about the status of the study. The Steering Committee recommends to activate the last four countries as quickly as possible.

The timelines of the project have been revisited. Please note the following milestones and their timelines:

- Data entry completed until November 30 by all participants
- Data management to start now for patients marked as complete in REDCap
- Data management to issue final queries until end of December
- Start of the evaluation in January 2024
- Preliminary results to be presented at SIOPEL spring meeting (date not yet available)

The Geneva Team urges all participating sites to please complete data for all records that are still tagged as incomplete (marked in red on the REDCap user interface)!

Database access

Access to the REDCap database must be restricted to persons who are actively involved in patient documentation. Therefore, please notify us of staff no longer on the project so that we can remove their access to the DB.

RELIVE people

Désirée-Angèle PRISO, Study Coordinator, Institute Gustave Roussy/France

Recently I was given the opportunity to work with Dr Brice FRESNEAU as Coordinator on several projects, like the HEPATIC Project on Autoimmune Hepatitis, and the HEPATOBIO project. The latter is a centralized collection of retrospective and prospective biological samples (tissues and fluids) taken within the framework of the diagnostic and therapeutic management of children and adolescents with liver tumor in France.



It is supported by the centers of the French Society for Childhood Cancers (SFCE) and comes with an associated clinical database. We have now extracted data from this database in order to incorporate them into the RELIVE database.

Up to now we have identified thirty-eight patients who satisfy the RELIVE eligibility criteria and who will soon be entered into the REDCap database. I hope we can identify more patients in the near future.

It is a great pleasure to participate in the RELIVE project and I am very proud to be part of it and look forward to see the results of this study.

